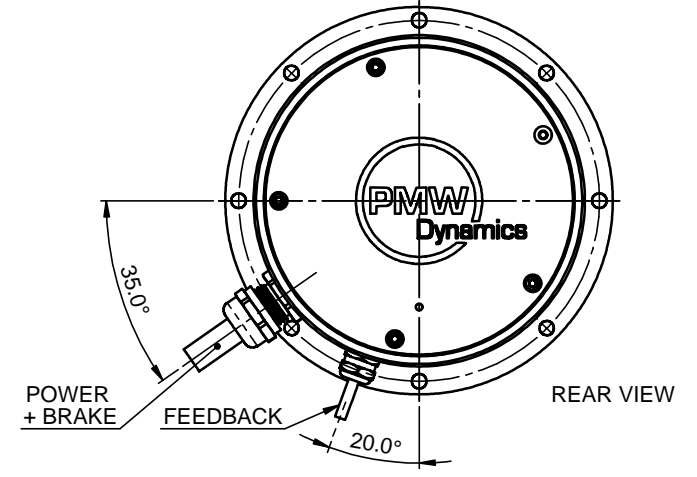
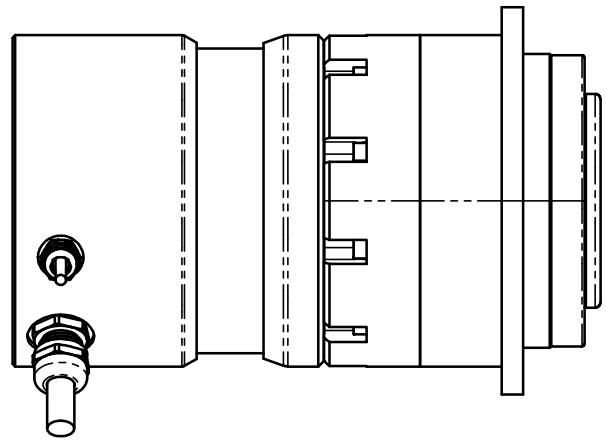
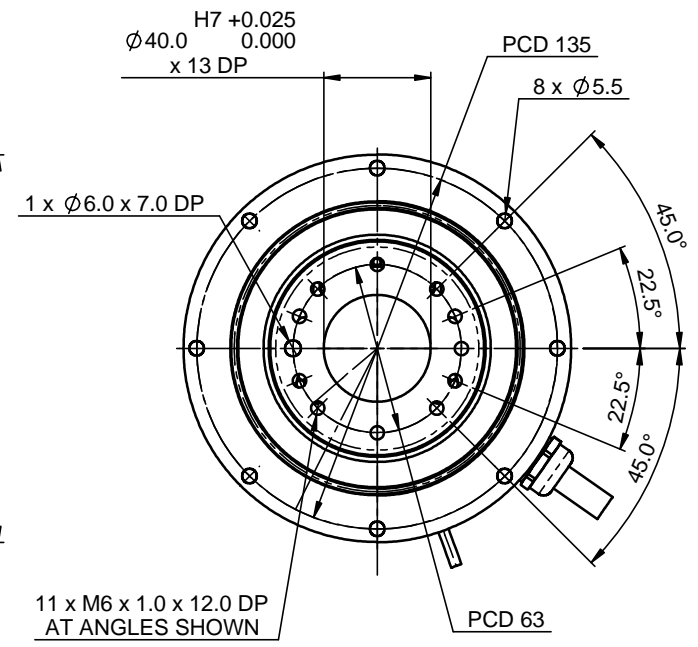
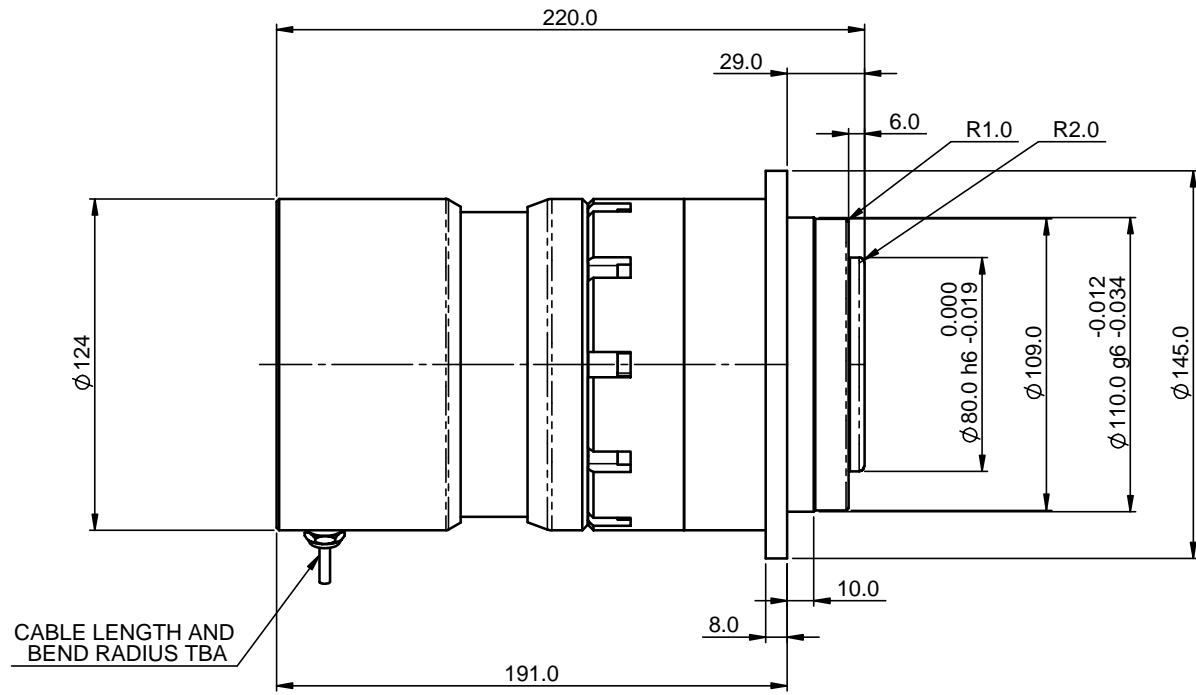


© PRINTED MOTOR WORKS LIMITED
 THIS DRAWING, ENGINEERING REPORT OR DOCUMENT IS COPYRIGHT AND PROPERTY IS RESERVED THEREIN AND THE INFORMATION CONTAINED THEREIN IS CONFIDENTIAL. THIS DRAWING, ENGINEERING REPORT OR DOCUMENT AND INFORMATION MAY NOT BE REPRODUCED OR COMMUNICATED TO A THIRD PARTY OR USED FOR ANY PURPOSE OTHER THAN THAT FOR WHICH IS SUPPLIED WITHOUT THE PRIOR WRITTEN CONSENT OF THE COMPANY.



UNLESS SPECIFIED SHAFT CENTRES SHALL CONFORM TO BS.EN.ISO 6411-1997 TYPE A. CENTRE DRILL TO CONFORM TO ISO.866 ALL METRIC THREADS TO BE COARSE CLASS 6H OR 6g		PART MARKING <small>INDELIBLY MARK ON PART No.</small> 		TOLERANCES UNLESS STATED 0. ± 0.4 0.0 ± 0.1 0.00 ± 0.05 ANGULAR ± 0.5°	DIMENSIONS mm	UNLESS SPECIFIED ALL CHAMFERS & RADII 0.5 MAX. REMOVE BURRS & SHARP EDGES. DIMENSIONS APPLY AFTER PLATING	P M W DYNAMICS ALTON, HAMPSHIRE, GU34 2QW, UK	
		DRAWN BY PK	DATE 16/10/2023	ESTIMATED MASS	MATERIAL		TITLE IG9190- MOTOR GEARBOX - 500W - OUTLINE	
		CHECKED BY	DATE	SCALE 1:2	FINISH		DO NOT SCALE. IF IN DOUBT ASK. BS 8888	DRAWING NUMBER 4812554
		APPROVED BY PK	DATE 04/09/2023					SHEET 1 OF 1